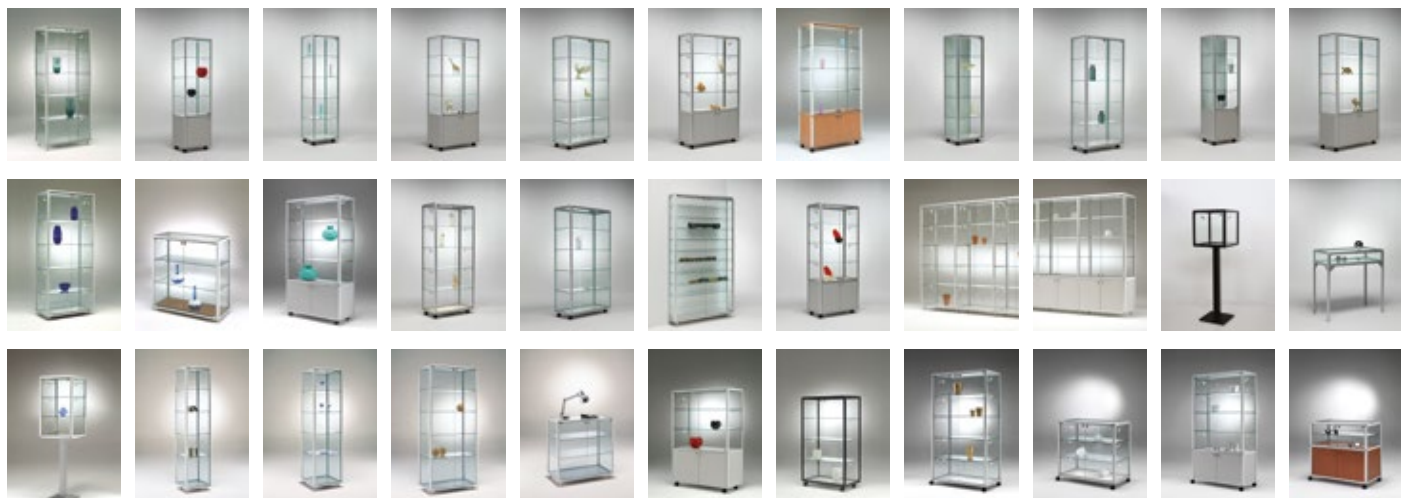


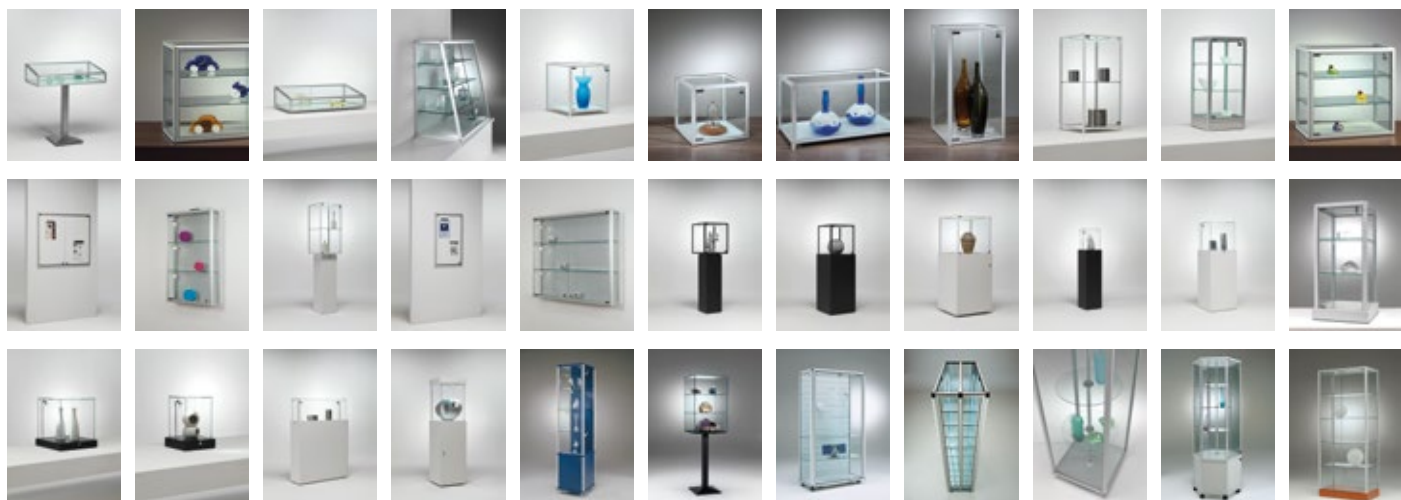
ÔFG

Ö ã •] | æ ^

Range



DISPLAY CASES | GLASS CABINETS



serie
C12

...

LVA inserts in its production C12 range, expressly conceived to meet the needs of the large-scale retail trade. Available in different sizes, this free-standing/wall showcase wants to satisfy those special presentation reasons understanding the wall as the proper space to emphasize the value of exhibited objects. The products' exhibition is even more enhanced and harmonized by the 12° skewed front.



MAIN FEATURES - STANDARD MODEL

- Free-standing showcase with embossed shelves
- Anodised aluminium frame
- Tempered glasses
- Dust-free packing around the whole frame
- Glass top
- Wood laminate base
- 12° skewed front
- Sliding doors set with lock



MOD. C12-74

STANDARD FINISHING + LED STRIP LIGHTING SYSTEM



MOD. C12-TA

STANDARD FINISHING + LED STRIP LIGHTING SYSTEM ON TOP

